

VANITY FAIR

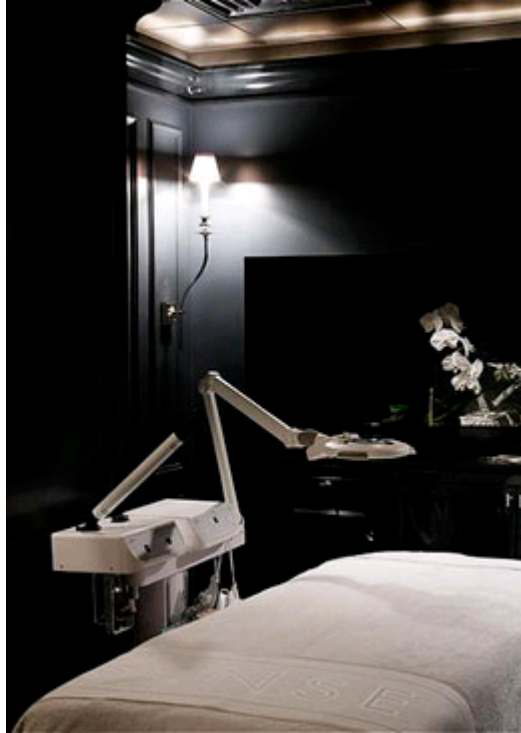
[Global Spa Roundup: Sense, a Rosewood Spa](#)

by [Meenal Mistry](#)

January 1, 2009, 1:30 PM



Tucked away on the third floor of New York City's Carlyle hotel, the recently opened [Sense, a Rosewood Spa](#), echoes the hotel lobby's Art Deco look with discreet and intimate elegance. The lacquered walls, charcoal-colored leather floors, and winking light from the English chandeliers give visitors the feeling of being cocooned in luxury. There's also the glamour of the barrel-vaulted staircase leading down to the treatment rooms, finished in hundreds of tiny, shimmering platinum tiles. "It's like an archaeological find," says spa director Donna Creagh. "As if you just opened the door and found this forgotten part of the hotel, from decades ago."



Part of Sense's appeal is its jewel-box size—a mere five client rooms—which allows for the privacy that Carlyle-ites crave. The facials, body treatments, and massages at Sense are the ne plus ultra of beauty. You can simply “feel” it—and for days afterward. The spa is probably best experienced through the Sense Spa Journey, a Japanese-inflected, three-hour all-over treatment that includes a ginger grass scrub to exfoliate, a shiatsu-inspired massage, and a customized facial. All the treatments, including the two-hour anti-aging facial, use fragrant botanical products exclusively from Sisley. (It's the company's sole alliance of this kind in North America and only its second in the world.)

There's also a petite hair salon, stocked with Leonor Greyl products and helmed by Upper East Side favorite Yves Durif, who does his French-style cuts in a semi-private room at a mirrored vanity, surrounded by his inspiration: framed Burt Glinn black-and-white prints of Elizabeth Taylor, Twiggy, and Brigitte Bardot with hair down. The charming Durif enjoys his new home, and so do his longtime clients, an elegant group that includes style-setters like Amy Fine Collins and Nina Griscom. “No one has complained,” Durif says. “You know why? People love the Carlyle.”

Sense, a Rosewood Spa, at the Carlyle hotel is located at 35 East 76th Street, New York, New York; (212) 744-1600.

www.vanityfair.com/online/style/2009/01/sense-spa-carlyle.html